

## Practical tip on reduction of official fees (examination fees and patent maintenance fees for the 1st to 10th years) for SMEs, Startups, and sole proprietors in Japanese patent applications

This document briefly describes the reduction of official fees (examination fees and patent maintenance fees) for small and medium-sized enterprises (SMEs), Startups, and sole proprietors in Japanese patent applications.

Firstly, if an applicant is an SME, Startup, or sole proprietor, it may benefit from the reduction of examination fees and patent maintenance fees (the 1st to 10th years).

In particular, the examination and patent maintenance fees can be reduced to **1/3 or 1/2** depending on the number of employees, capital, and the number of years of establishment.

The following is a decision flowchart regarding the reduction of official fees (examination fees and patent fees) for enterprises. Note that we do not describe the fee reduction for universities herein, which will be able to enjoy 1/2 fee reduction irrespective of nationality.

### Decision Flowchart regarding reduction of official fees (examination fees and patent fees) for Enterprises

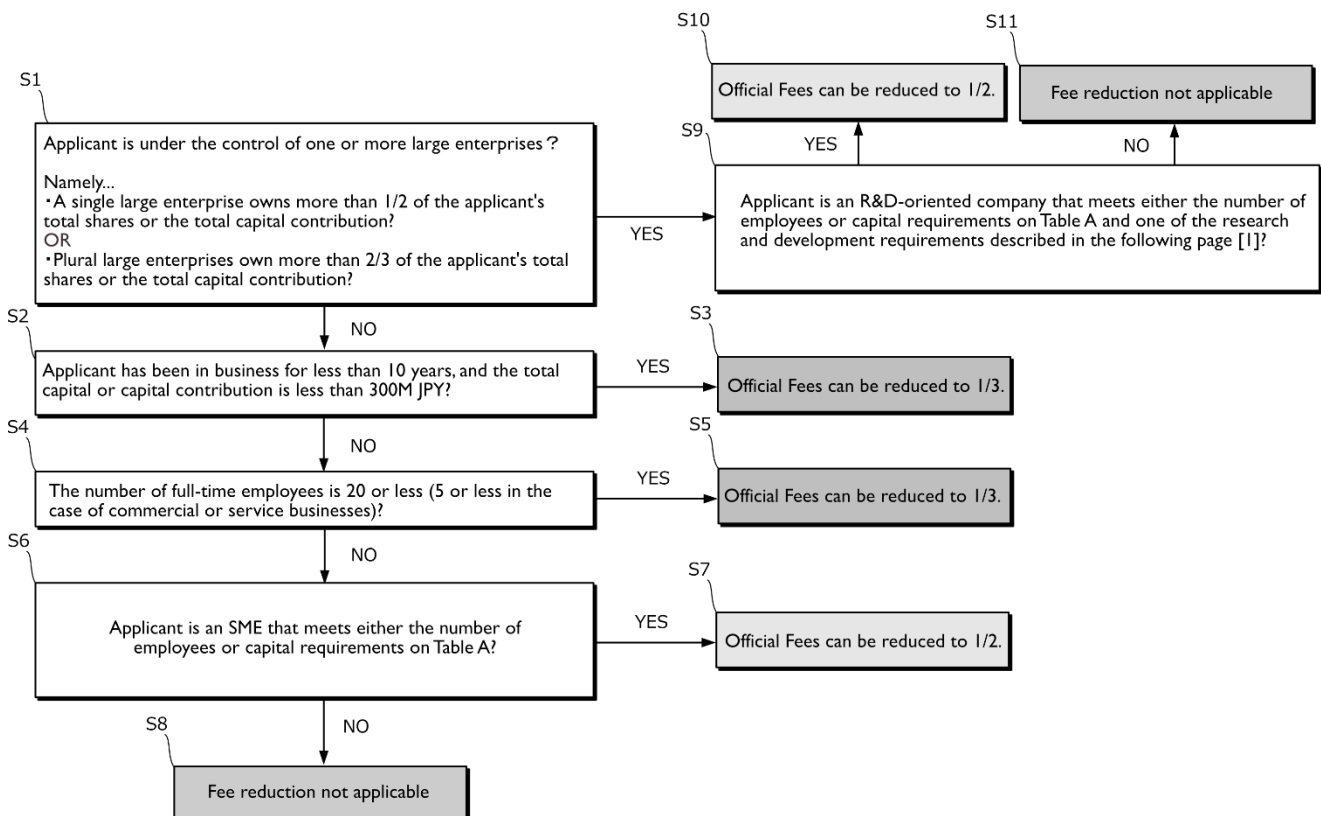


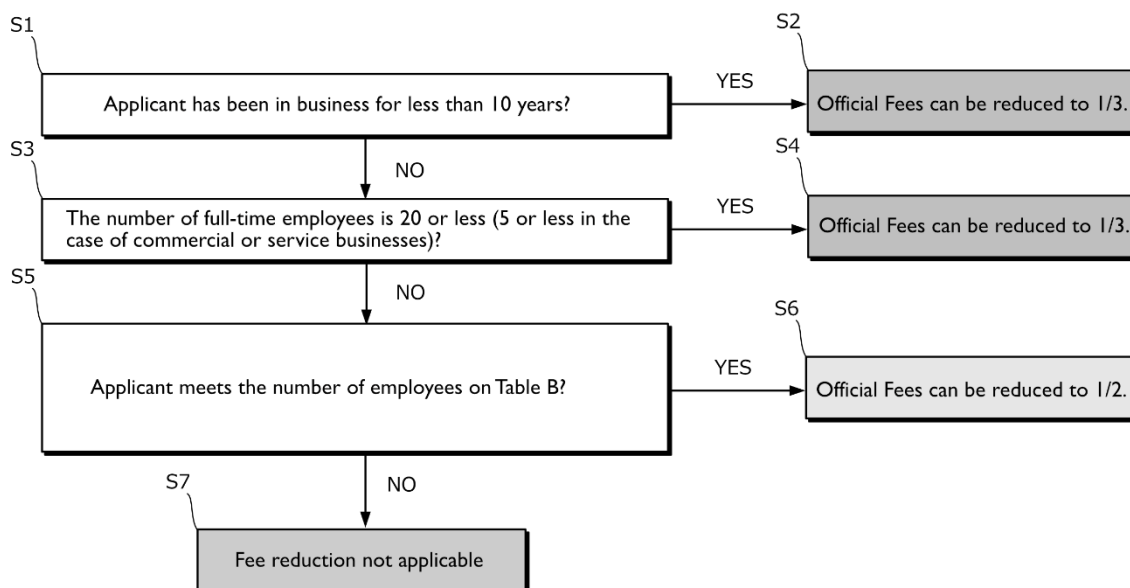
Table A

Type of Industry	Number of regular employees	Capital or Total Investments received
(a) Manufacturing, construction, transportation, and other industries (excluding industries listed in (b) to (g))	300 or less	300M JPY or less
(b) Wholesale	100 or less	100M JPY or less
(c) Service (excluding industries listed in (f) and (g))	100 or less	50M JPY or less
(d) Retail	50 or less	50M JPY or less
(e) Manufacture of rubber products (except manufacture of tires and tubes for automobile or aircraft; and manufacture of industrial belts)	900 or less	300M JPY or less
(f) software or information processing service	300 or less	300M JPY or less
(g) Hotel	200 or less	50M JPY or less

[1][https://www.jpo.go.jp/system/process/tesuryo/genmen/genmen20190401/02\\_06.html#kenkyu](https://www.jpo.go.jp/system/process/tesuryo/genmen/genmen20190401/02_06.html#kenkyu)

The following is a decision flowchart regarding the reduction of official fees (examination fees and patent fees) for sole proprietors. It should be noted that individuals who do not do business by themselves are not eligible for fee reduction.

Decision Flowchart regarding reduction of official fees (examination fees and patent fees) for Sole Proprietors



**Table B**

Type of Industry	Number of regular employees
(a) Manufacturing, construction, transportation, and other industries (excluding industries listed in (b) to (g))	300 or less
(b) Wholesale	100 or less
(c) Service (excluding industries listed in (f) and (g))	100 or less
(d) Retail	50 or less
(e) Manufacture of rubber products (except manufacture of tires and tubes for automobile or aircraft; and manufacture of industrial belts)	900 or less
(f) software or information processing service	300 or less
(g) Hotel	200 or less

Please also refer to the following page:

<https://ipstart.jp/en/official-fee-reduction-for-sme-startup-individual/>